

Curriculum

Steve Spangler Science Kits

STEM in the Gym

Perfection Learning
CATCH

MindWorks

Lego Education Kits

- *Robotics
- *Early Learning Centers
- *Simple Machines
- *Digital Story Telling

Other Possibilities:

- *Art
- *Archery
- *Foreign Language
- *Cooking
- *Sewing
- *And MANY more...

Equipment

80 Ipad Minis

3 XBoxes with Kinects (10 Games)

Frequently Asked Questions

How much do the programs cost for my child to attend? IT IS FREE!!

Does my child need to attend everyday? IN ORDER TO KEEP THE FUNDING OF THE GRANT, WE MUST HAVE A CONSISTENT NUMBER OF STUDENTS DAILY.

Will my child get "burnt out" with this program? IT IS OUR #1 GOAL TO MAKE THIS A FUN LEARNING EXPERIENCE FOR YOUR CHILD.



Community Partners

Haderlein PTO

Heartland Electric

Girard Medical Center

Greenbush Education Center

K-State Extension

Community Health of Southeast Kansas



Haderlein Elementary School
520 W. Prairie
Girard, KS 66743
620-724-4327

For More information please contact:
Tyler Jackman tjackman@girard248.org
Tina Peak tpeak@girard248.org



What are 21st Century Learning Centers?

*federally funded for before/after school programs

*funded on a yearly basis for a period of up to five years

*offer students a broad array of enrichment activities

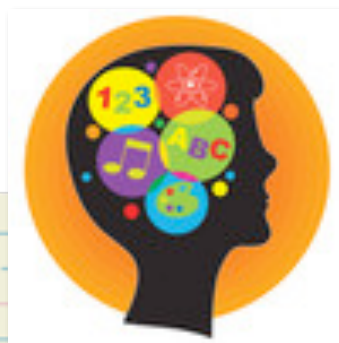
*offer literacy and other educational services to families of participating children

After School Programming

Monday, Tuesday, Thursday, Friday

3:15-5:15

No Wednesday Sessions



TRANSPORTATION

Transportation will be provided to and from R.V. Haderlein from designated drop off points in our district.

We can only provide transportation for students that live OUTSIDE of Girard City Limits.



Daily Schedule

3:15-3:30 - Snack in the Cafeteria

3:30-4:05 - Homework/Extended Learning

4:05-4:40 - Enrichment/Tutoring

4:40-5:15 - Enrichment/Tutoring

SUMMER PROGRAM

Month of June

Monday-Friday

8:00AM-11:00AM

Fridays will be at Greenbush

WHEN IS ENROLLMENT?

Enrollment for the Summer School Program will be at the end of April/ beginning of May.

