

# District Profile

## USD 248 Girard

---

### Table of Contents:

#### Census Demographics:

County Profile Information  
Census Data - Geographic Comparison City, District, County, and State

#### School District Demographics:

Enrollment Trends by Type, Race, and Lunch Status  
Student-Teacher Ratio / Dropouts  
Trends in Attendance Rates  
Trends in Graduation Cohort Groups

#### College and Career Readiness - Assessments and Achievement:

ACT Scores  
Postsecondary Progress  
District Reading Scores by Proficiency Level, Subgroup, and Grade  
District Math Scores by Proficiency Level, Subgroup, and Grade

#### District Comparisons:

US Census / American Community Survey Data  
KSDE Data

### Data Provided by:



# County Profile Information

## Crawford County, Kansas

According to figures provided in the Kansas Statistical Abstract, the population of Crawford county was approximately 39164 in 2016. This represents a 0.08% change or net migration since the 2010 United States Census. With a total number of 589.8 square miles in the county, the population density for the county is 66.4 people per square mile. This places the county in the KDHE population peer group of a Semi-Urban area. According to projections reported in the Kansas Statistical Abstract, the percentage change in total population through the year 2040 is estimated at 12.6 for the county.

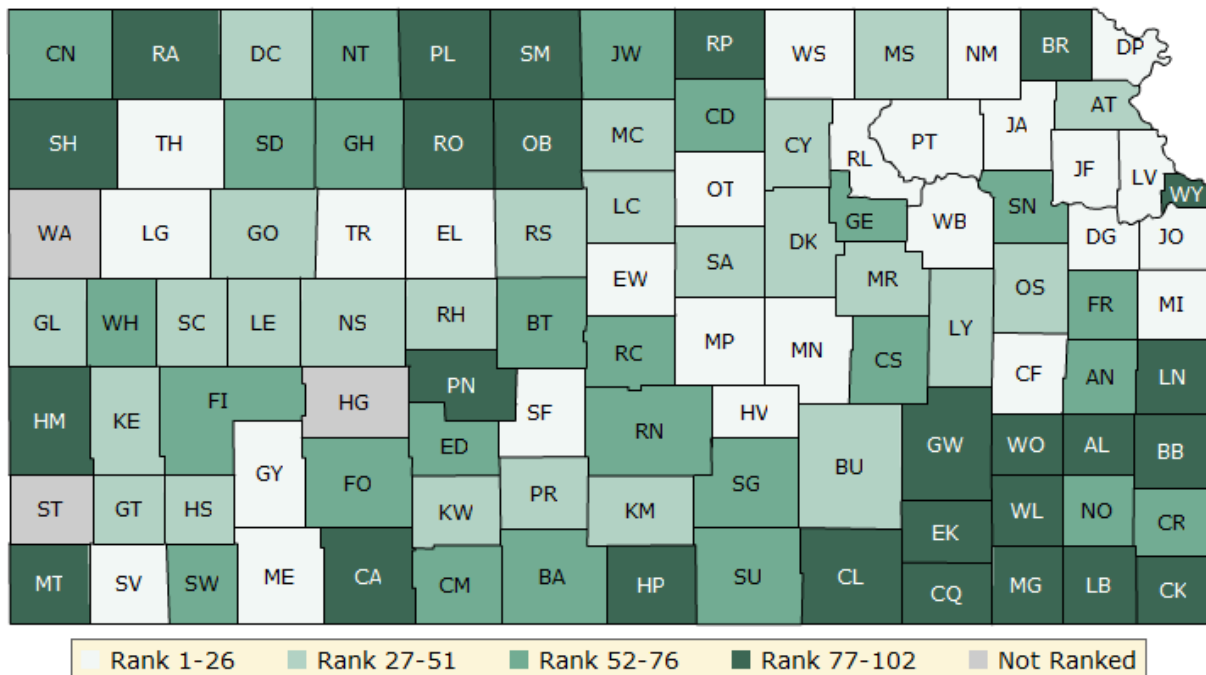
## County Health Rankings:

The County Health Rankings (provided by the Robert Wood Johnson Foundation) measure the health of nearly all counties in the nation and rank them within states. The Rankings are compiled using county-level measures from a variety of national and state data sources with 1 being the best.

The overall rankings in health factors represent what influences the health of a county. They are an estimate of the future health of counties as compared to other counties within a state. The ranks are based on four types of measures: health behaviors, clinical care, social and economic, and physical environment factors.

Details regarding this data can be found at: <http://www.countyhealthrankings.org/#app/>

### Crawford County Health Factor Ranking 2017: 76 / 102



# US Census: County / District Comparison

US Census: American Community Survey  
5-Year Data 2016

Girard

District  
248

CRAWFORD  
County

Kansas

## FAMILY INCOME:

Median Family Income	\$44,444	\$45,330	\$56,477	\$68,231
Mean Family Income	\$59,203	\$54,489	\$66,693	\$86,732
Percent of families with children in poverty	47.8	17.9	3.6	15.4
Percent of households with Public Asst income	2.3	1.7	1.8	1.9
Percent of households with Food Stamp benefits	14.7	9.8	12.7	9.1

## EDUCATIONAL ATTAINMENT: Population over 25 years old - percent

Less than 9th grade	1.8	2	3.6	3.8
9th to 12th grade - No Diploma	5	6.6	6.3	5.9
Total with No High School Diploma / GED	6.8	8.6	9.9	9.7
High School Diploma or Equivalency	36.8	39.6	28.8	26.6
Bachelor's Degree or More	15.6	13.1	17.6	31.6

## HOUSEHOLD COMPOSITION:

Percent of households that are families	66.8	72.3	58.5	65.4
Average family size	3.24	3.28	3.15	3.12
Married couple families (children under 18)	18.1	20.5	17.4	20.8
Single parent household- female only	8.9	4.6	6.1	6.3
Single parent household- male only	4.1	2.2	2.3	2.5

## HOUSING DATA:

Year housing built - median age / years	53	55	46	44
Median value of owner-occupied homes	\$67,000	\$81,700	\$85,100	\$135,300
Vacancy rate of all housing units	19.7	21.1	10.7	10.7

## UNEMPLOYMENT DATA:

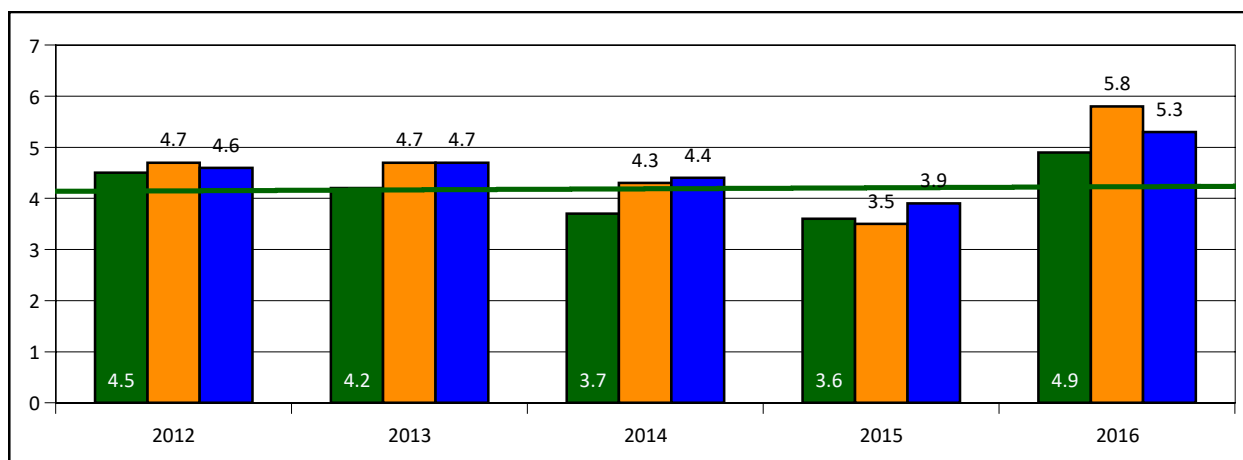
District Rate



County Rate



State Rate

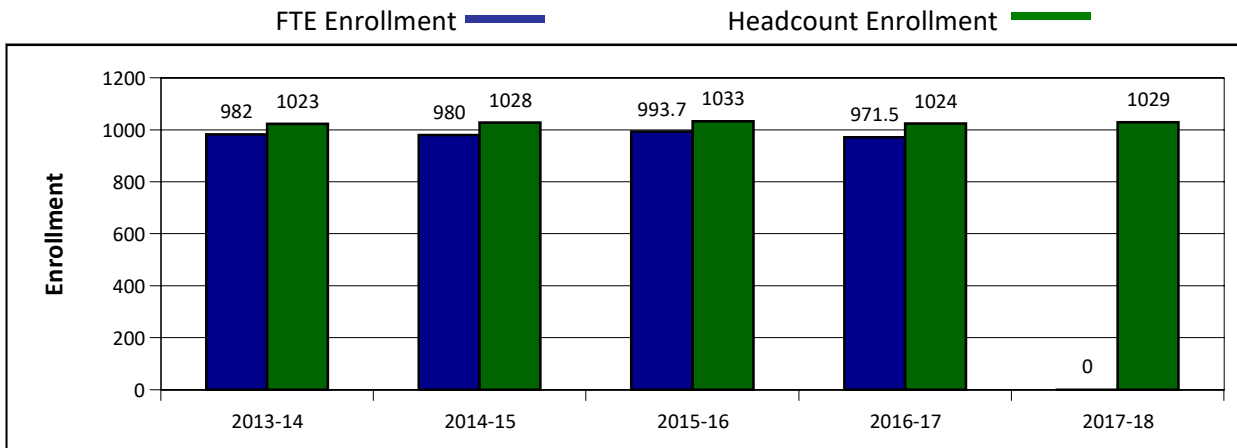


\*Source: American Community Survey 5-Year Estimates

EMPLOYMENT STATUS - % Population over 16 who are in the civilian labor force and not employed

# District Demographics

## DISTRICT ENROLLMENT TRENDS:

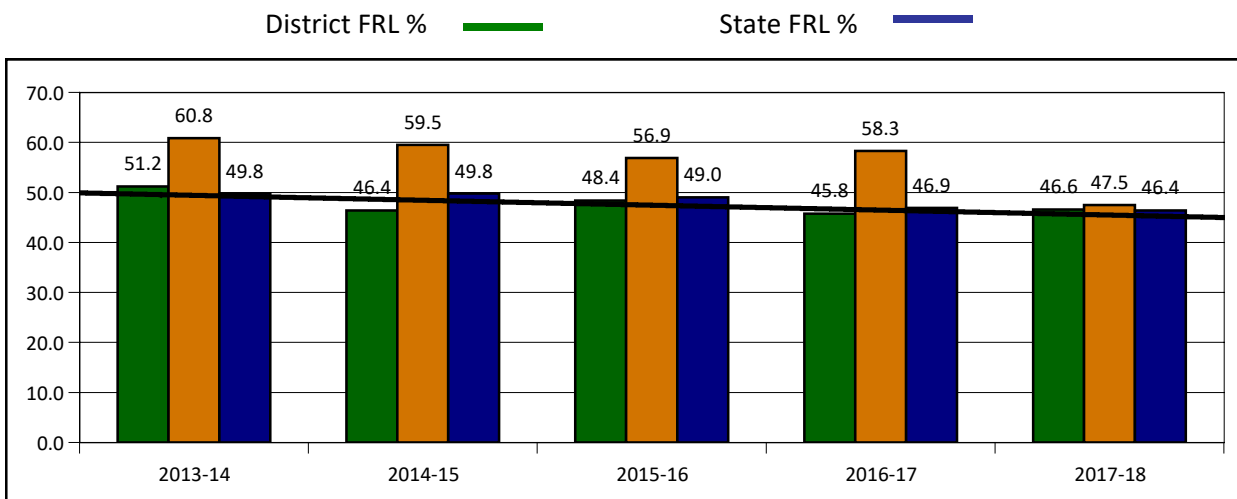


\*SOURCE: KSDE Comparative Performance Fiscal System

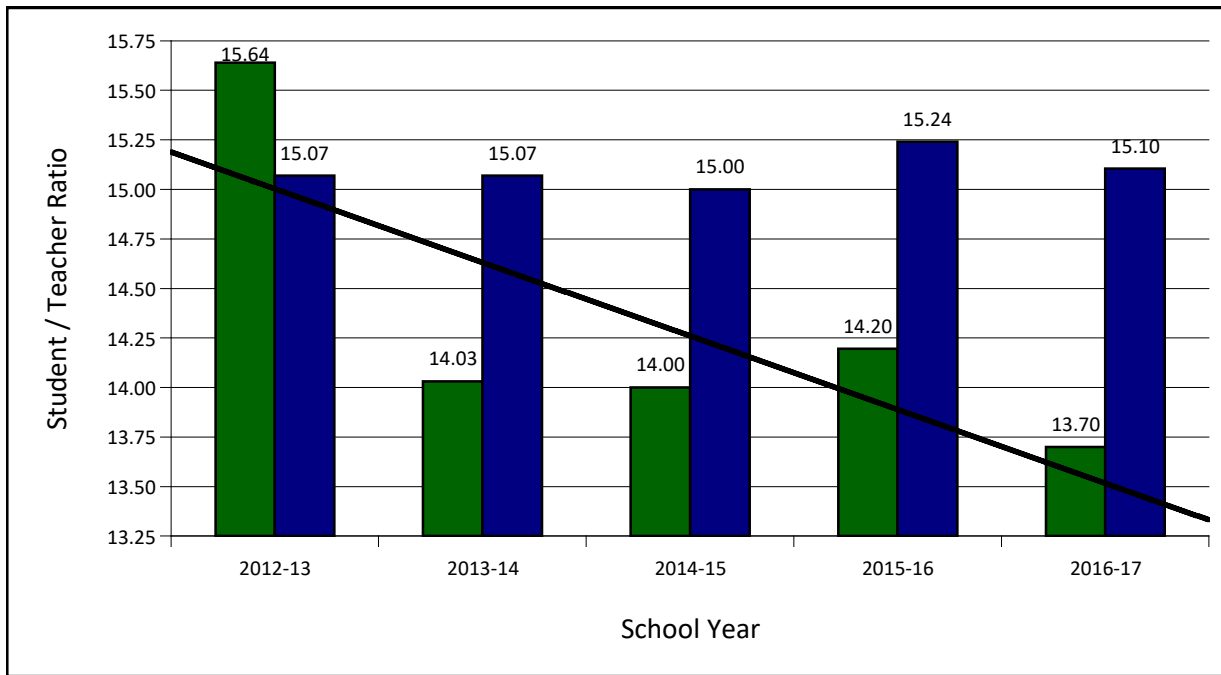
## COMPARATIVE HISTORY ENROLLMENT DEMOGRAPHICS:

YEAR	WHITE	AFRICAN-AMERICAN	HISPANIC	OTHER	STUDENTS WITH DISABILITIES	ELL
2012-13	90.00%	1.80%	4.00%	4.10%	12.42%	0.00%
2013-14	89.50%	2.10%	4.60%	3.80%	12.69%	0.00%
2014-15	88.50%	2.00%	5.20%	4.30%	12.03%	0.00%
2015-16	88.30%	1.90%	5.80%	4.00%	11.38%	1.66%
2016-17	88.60%	2.10%	5.50%	3.90%	11.85%	1.67%
<b>KS 2016-17</b>	<b>65.00%</b>	<b>7.00%</b>	<b>20.00%</b>	<b>9.00%</b>	<b>14.42%</b>	<b>11.70%</b>

## COMPARATIVE HISTORY FREE REDUCED LUNCH ELIGIBILITY:



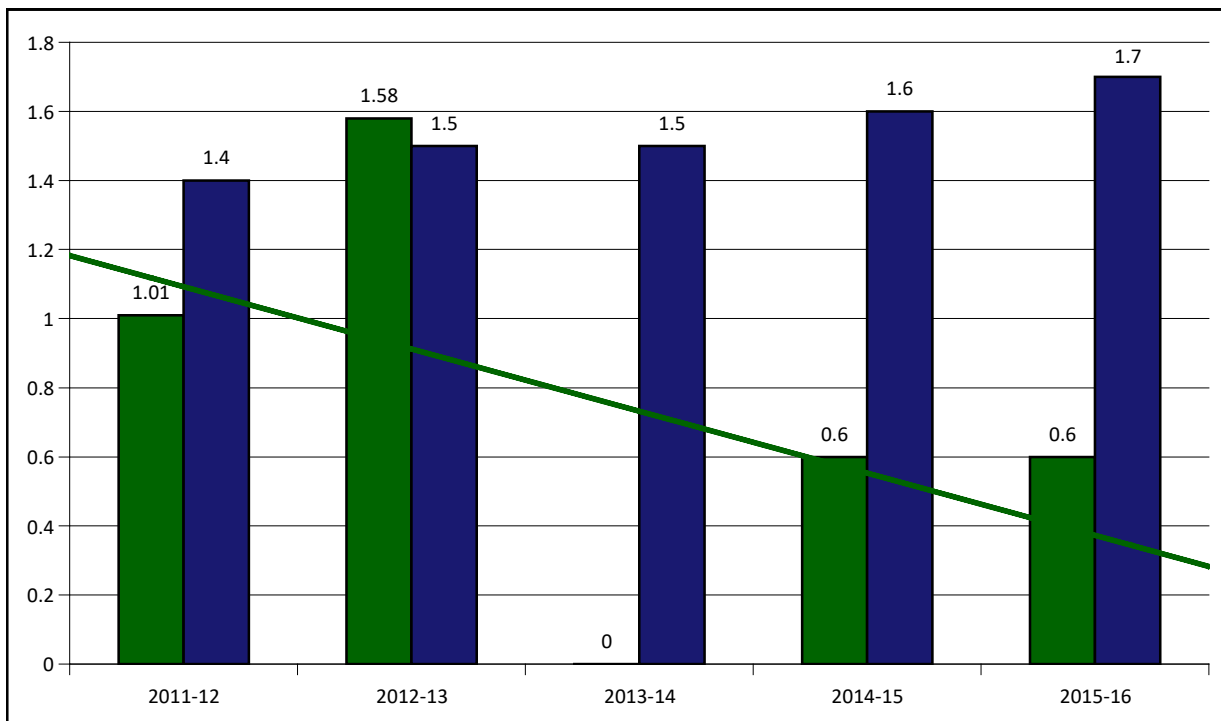
**STUDENT / TEACHER RATIO:**



\*SOURCE: KSDE School Finance Publications - Selected School Stats

District Data █ State Data █

**DROPOUT RATES (ALL STUDENTS):**

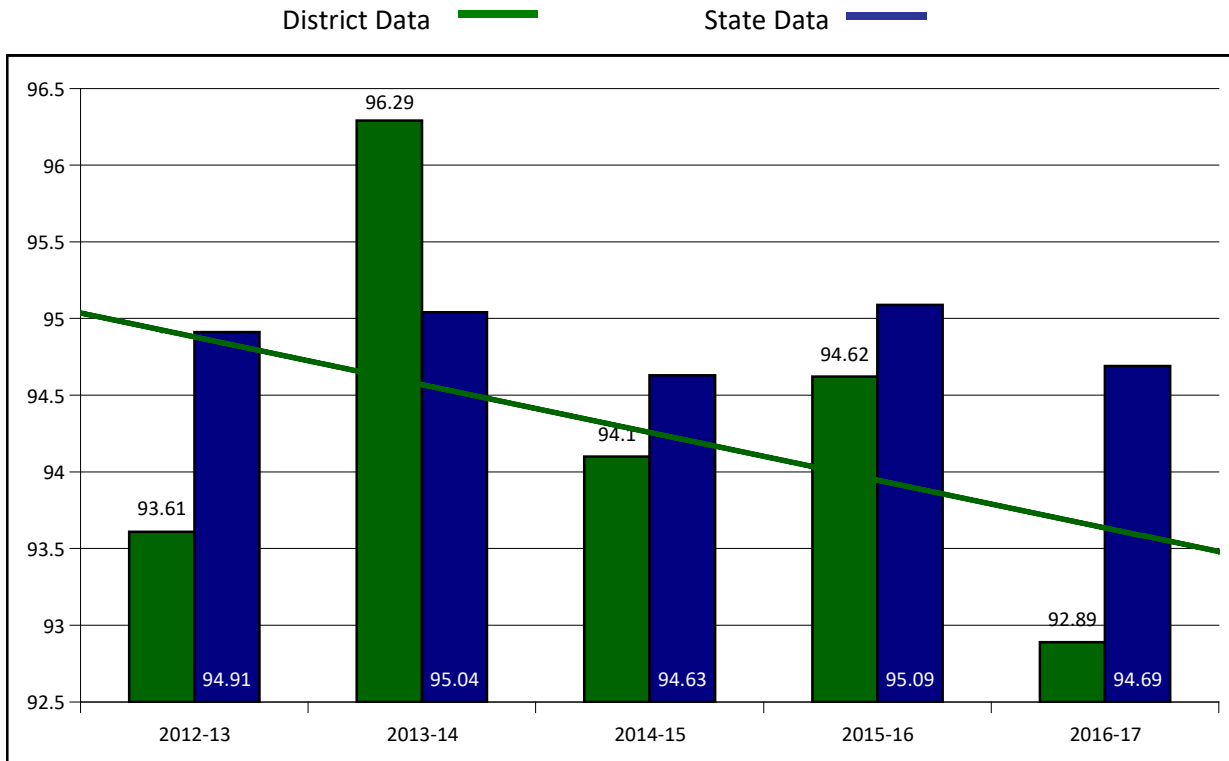


\*SOURCE: KSDE K-12 School Reports - Dropouts by Grade, Race, and Gender

## ATTENDANCE

Attendance rate in the following chart includes both Kindergarten and Grades 1-12 Average Daily Attendance. Rates have been suppressed if either group has average daily membership of between one and nine students due to FERPA regulations.

### K-12 ATTENDANCE RATES (ALL STUDENTS):



\*SOURCE: KSDE K-12 School Reports

### ATTENDANCE RATES BY DISAGGREGATED GROUP:

Subgroup rates calculated as follows:

$$\frac{\text{Grades 1-12 Avg Daily Attendance (MALE)} + \text{Grades 1-12 Avg Daily Attendance (FEMALE)}}{\text{Grades 1-12 Avg Daily Membership (MALE)} + \text{Grades 1-12 Avg Daily Membership (FEMALE)}}$$

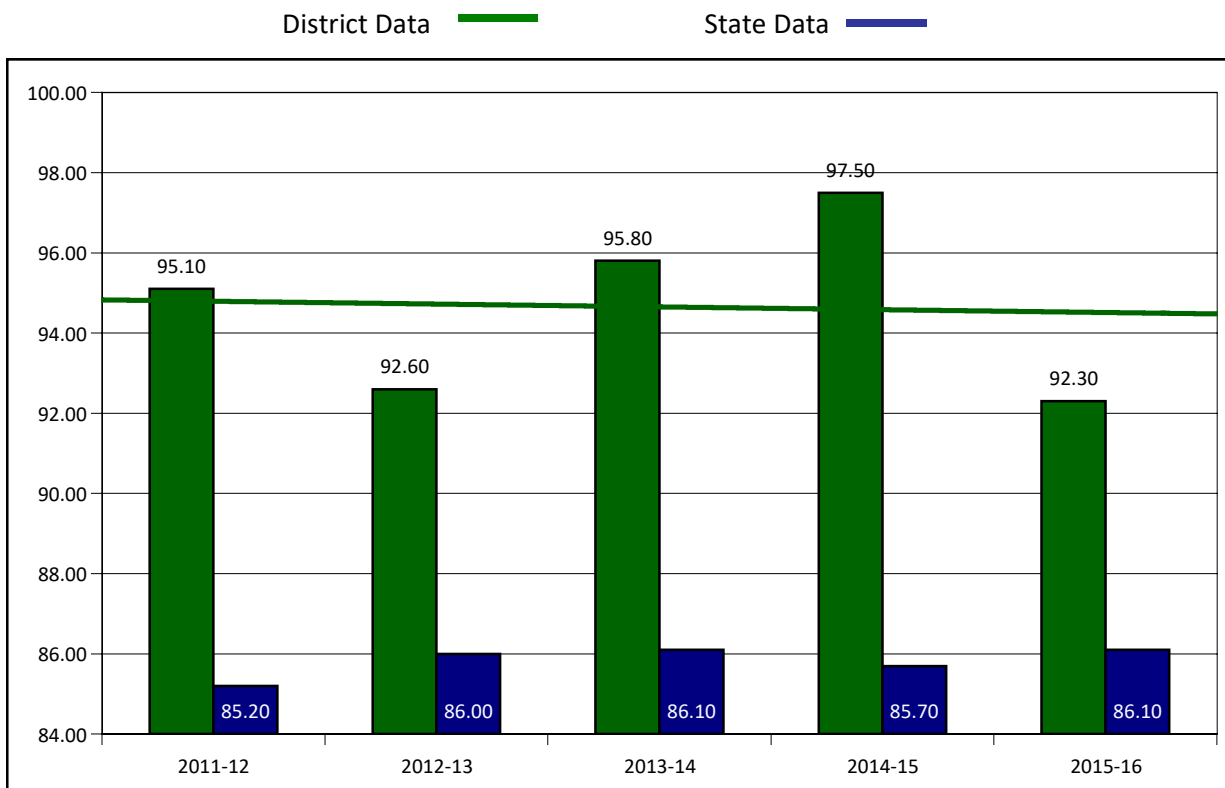
YEAR	MALE	FEMALE	FRL	SpEd	WHITE	BLACK	HISPANIC	MULTI-RACE	NATIVE AMERICAN
2011-12	96.1%	95.9%	95.5%	95.7%	96.0%	97.1%	95.7%	95.7%	94.4%
2012-13	93.8%	93.4%	92.5%	91.9%	93.6%	94.0%	93.6%	93.8%	91.4%
2013-14	96.4%	96.3%	95.7%	96.1%	96.4%	97.6%	95.4%	96.0%	95.1%
2014-15	94.0%	94.2%		94.3%	94.1%		93.5%	93.5%	
2015-16	94.5%	94.6%	93.8%	94.6%	94.6%		94.3%	94.9%	

\*Blanks indicate data suppression for <10 students for gender in subgroup

### GRADUATION RATES BY COHORT

Graduation data prior to 2008-2009 used the National Center for Education Statistics (NCES) formula. 2008-2009 graduation data used the No Child Left Behind (NCLB) formula. 2009-2010 graduation data and beyond will use the Four-Year Adjusted Cohort formulas. As a result, it is imperative that no comparisons be made between graduation data from 2009 and earlier and graduation data from 2010 and beyond.

### 4-YEAR COHORT GRADUATION RATES (ALL STUDENTS):



\*SOURCE: KSDE Kansans CAN Building Report Card: Graduation Indicators - 4 Year By Subgroup

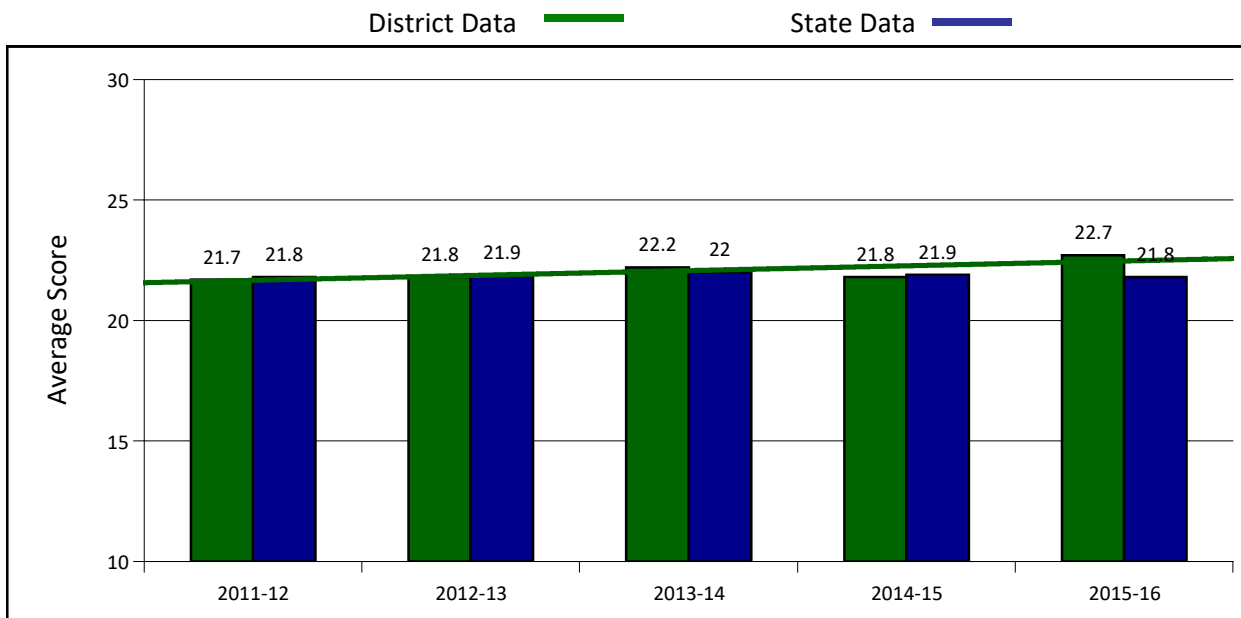
### 4-YEAR COHORT GRADUATION RATES BY DISAGGREGATED GROUP:

YEAR	ALL STUDENTS	FRL	SpEd	WHITE	BLACK	HISPANIC	MULTI-RACE	NATIVE AMERICAN	ELL
2011-12	95.1	90.9	72.7	94.6	100.0	100.0	100.0		
2012-13	92.6	96.8	100.0	98.3	0.0	0.0	0.0		
2013-14	95.8	95.1	85.7	95.3	100.0	100.0	100.0	100.0	0.0
2014-15	97.5	94.3	80.0	97.2	100.0	100.0	100.0	100.0	0.0
2015-16	92.3	87.2	100.0	91.7	100.0	100.0	100.0	100.0	100.0

\*Blanks indicate data suppression for <10 students in subgroup.

# College and Career Readiness

## AVERAGE ACT SCORES:



\*SOURCE: KSDE Kansans CAN - ACT Scores

## POSTSECONDARY SUCCESS:

### SUCCESS RATE:

A student must meet one of the four following outcomes within two years of High School graduation.

1. Student earned an industry recognized certification while in high school
2. Student earned a postsecondary certification
3. Student earned a postsecondary degree
4. Student enrolled in postsecondary in both the first and second year following high school graduation

### EFFECTIVE RATE:

A student must meet one of the four following outcomes within two years of High School graduation.

The calculated Graduation Rate multiplied by the calculated Success Rate.

YEAR	SUCCESS RATE		EFFECTIVE RATE	
	District	State	District	State
2011	55.7	54.8	51.1	45.6
2012	55.1	54.0	52.4	46.0
2013	64.4	55.5	59.0	47.6
2014	52.9	56.1	50.7	48.3
2015	73.1	50.9	71.2	43.6

\*SOURCE: KSDE KansansCAN - Board Goals / Postsecondary Success



## Reading Assessments Data

### ASSESSMENT SCORING EFFECTIVE 2014-15 SCHOOL YEAR

Level 1: Student is not performing at grade-level standards.

Level 2: Student is doing grade-level work as defined by the standards but not at the depth or level of rigor to be considered on-track for college success.

Level 3: Student is performing at expectation for that grade and is on track to being college ready.

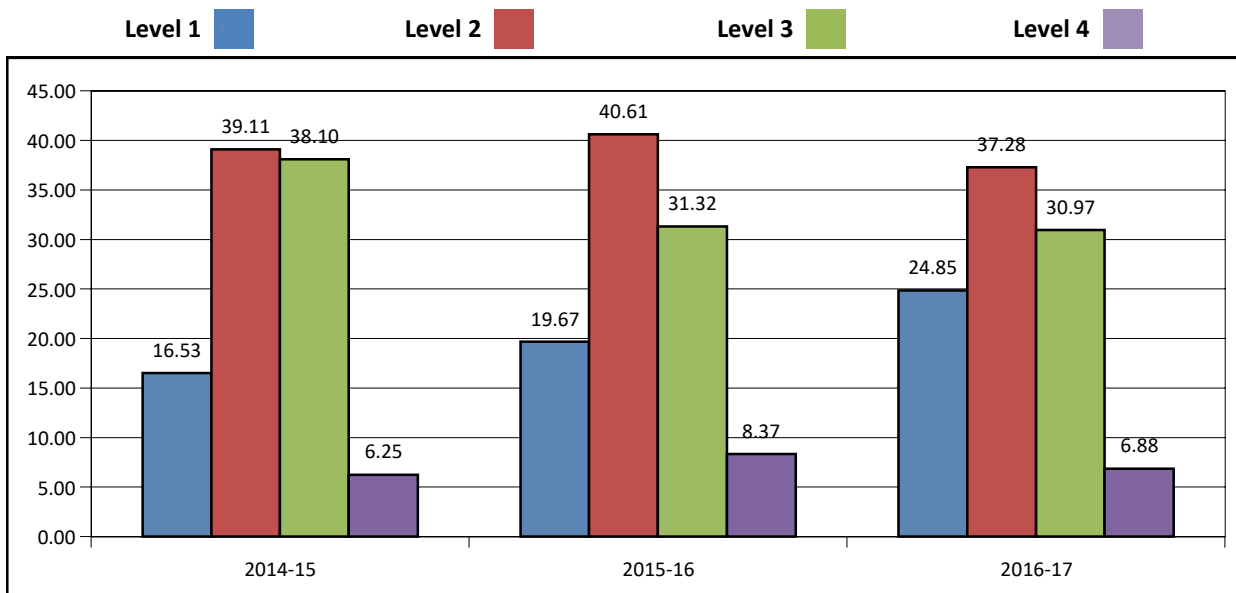
Level 4: Student is performing above expectations and is on-track to being college.

### PERCENT SCORING AT OR ABOVE GRADE LEVEL (ALL STUDENTS)

Numbers below represent the percent of students scoring in Level 2 or above. Groups with less than 10 students assessed for any given grade or year will be blank.

School Year	All USD	3rd	4th	5th	6th	7th	8th	High School
2014-15	83.46	85.90	91.55	85.89	73.12	71.86	86.28	86.66
2015-16	80.30	82.91	94.43	79.76	69.12	80.29	73.52	82.40
2016-17	75.13	85.23	89.40	79.16	59.75	69.40	71.21	74.61

### PERCENT BY SCORE LEVEL: ALL STUDENTS DISTRICT AVERAGE

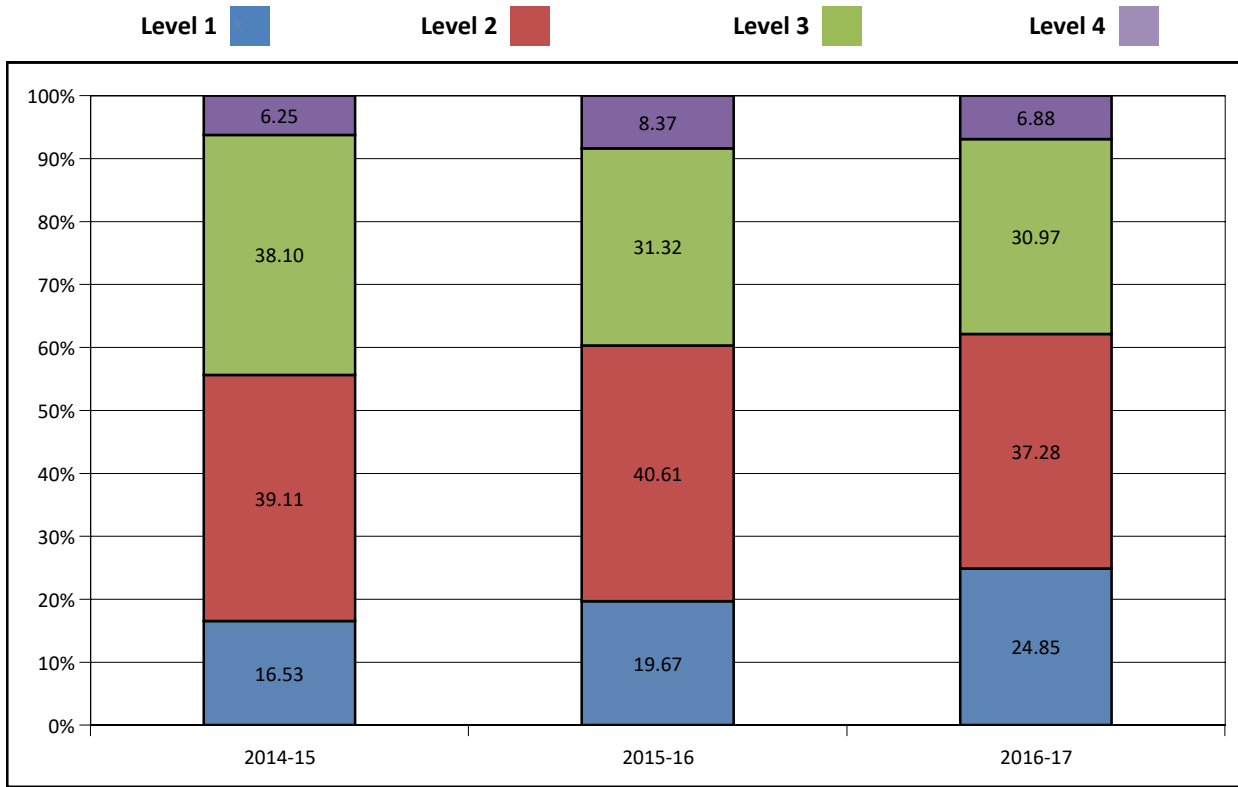


### SCORES BY SUBGROUP (ALL GRADES)

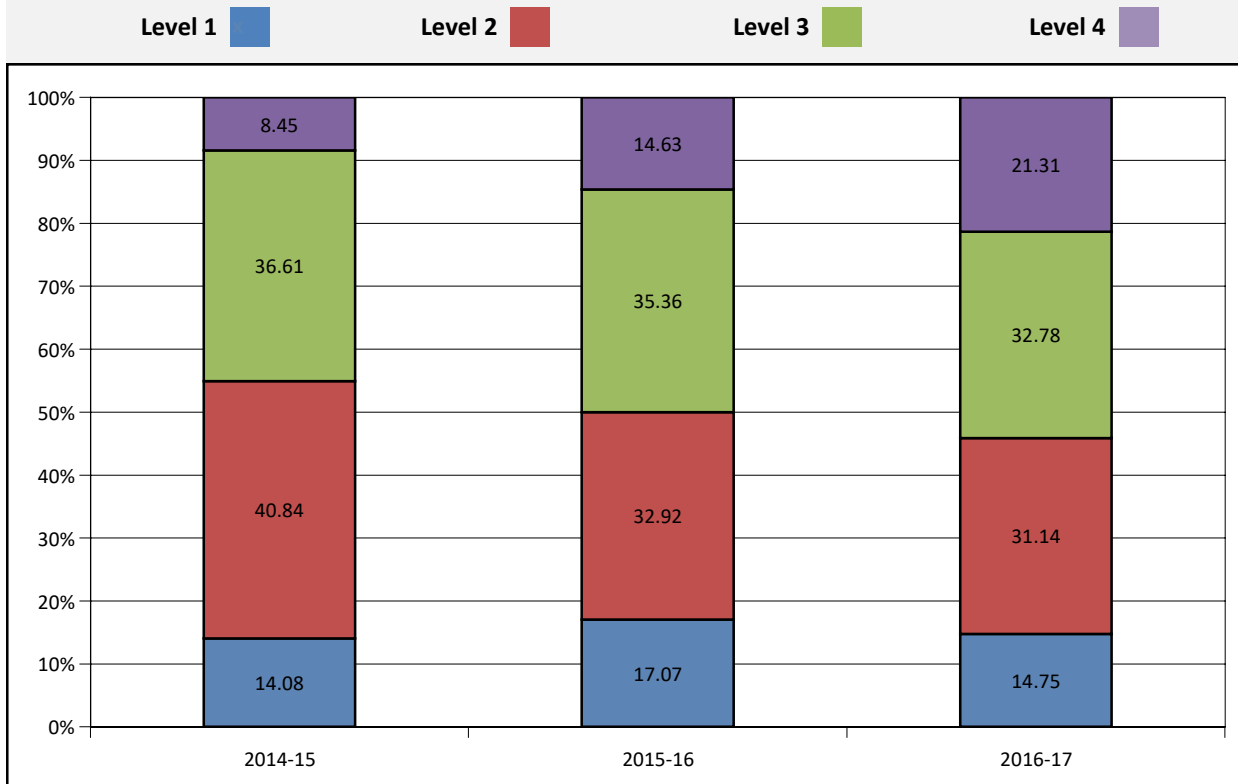
Numbers below represent the percent of students scoring in Level 2 or above. Groups with less than 10 students assessed for any given year will be blank.

School Year	All USD	All KS	FRL	SpEd	White	African American	Hispanic	Multi-Race
2014-15	83.46	79.26	88	43.32	83.66		79.3	86.65
2015-16	80.3	76.65	74.35	46.14	81.81		59.37	75
2016-17	75.13	72.63	68.74	44	75.36		77.77	71.42

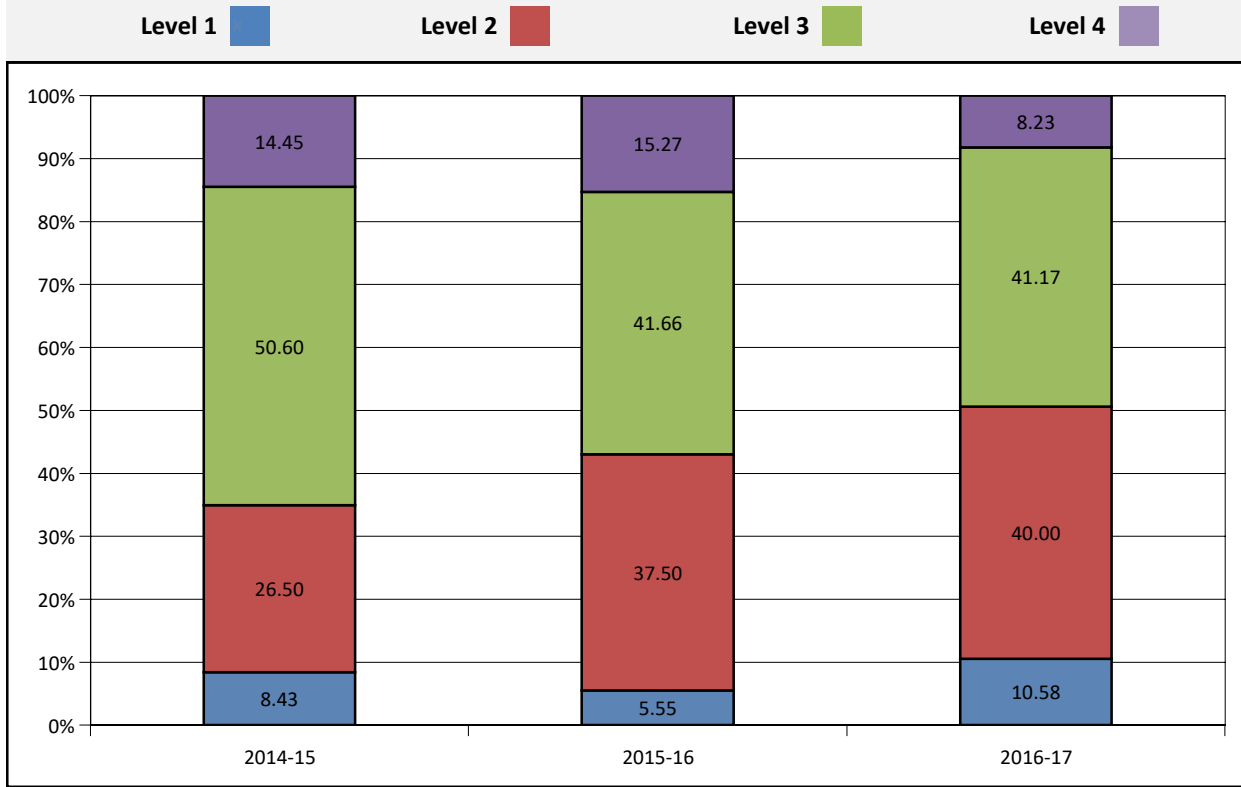
## District Average Reading Assessments Data



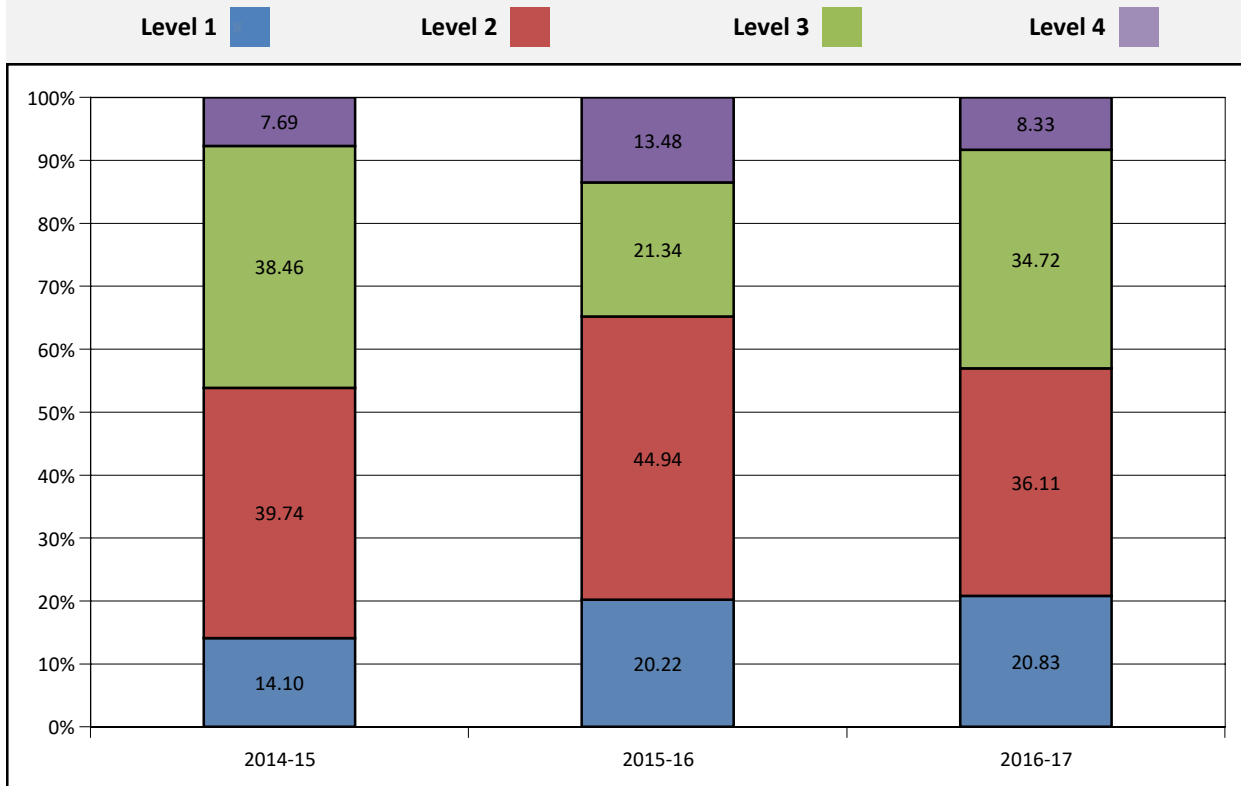
## 03 Reading Assessments Data



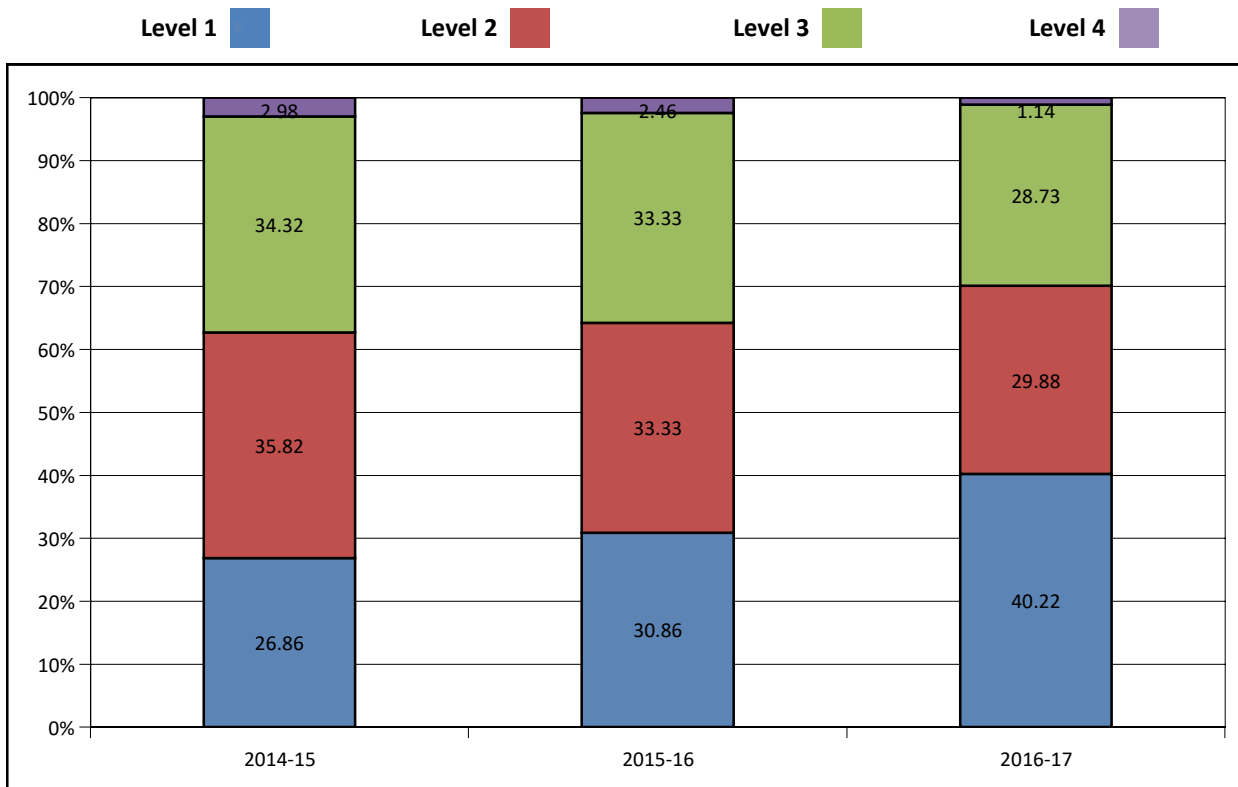
## 04 Reading Assessments Data



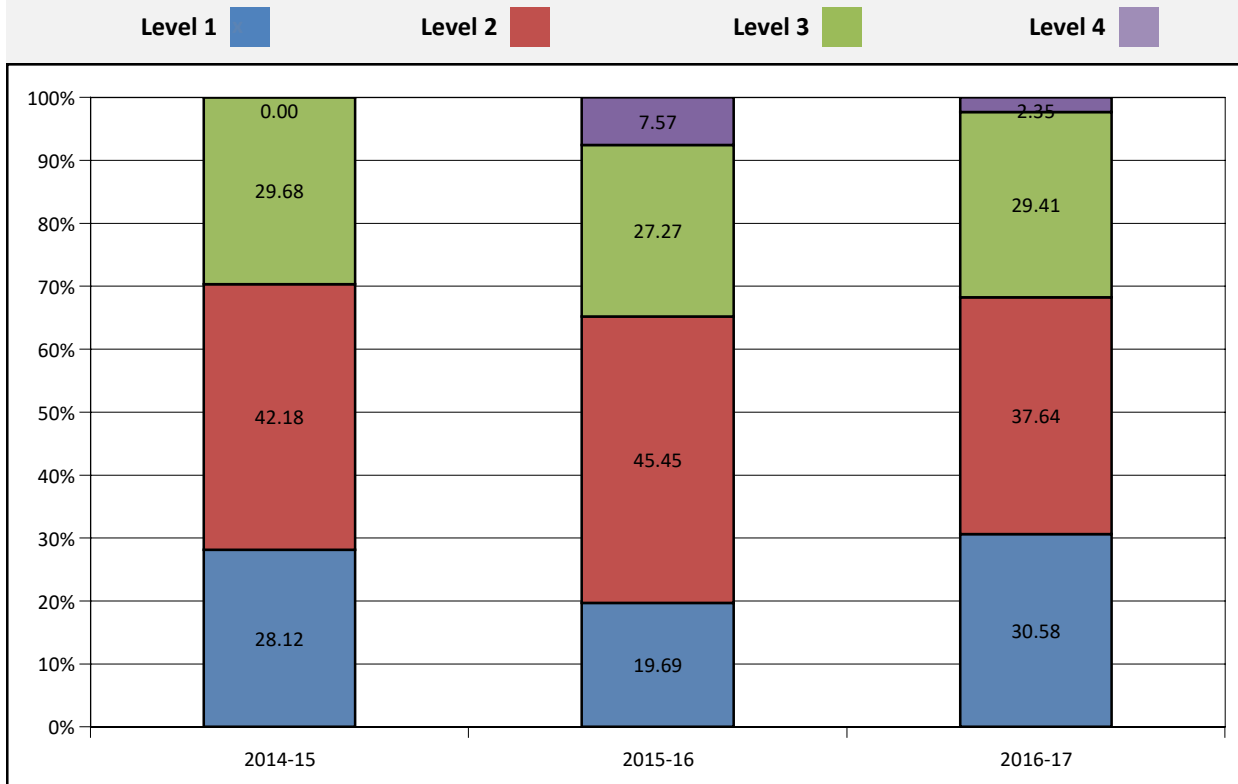
## 05 Reading Assessments Data



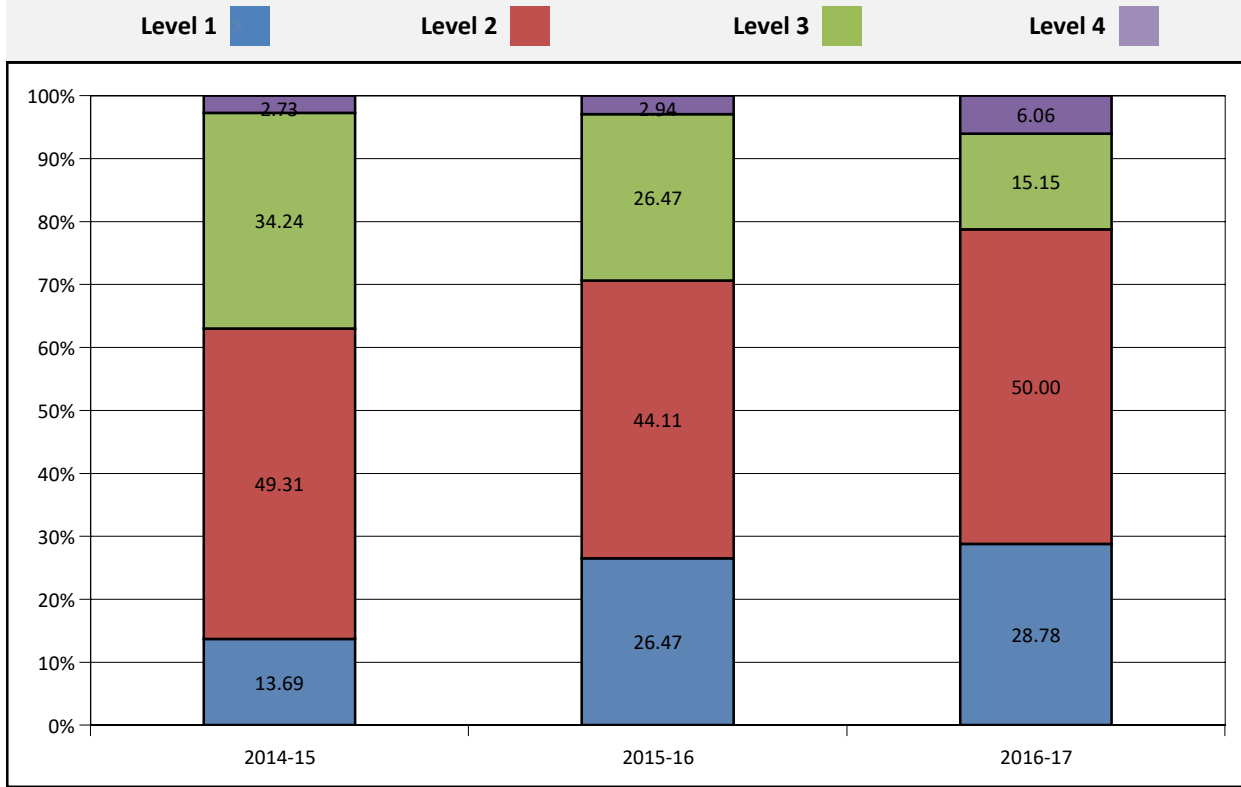
## 06 Reading Assessments Data



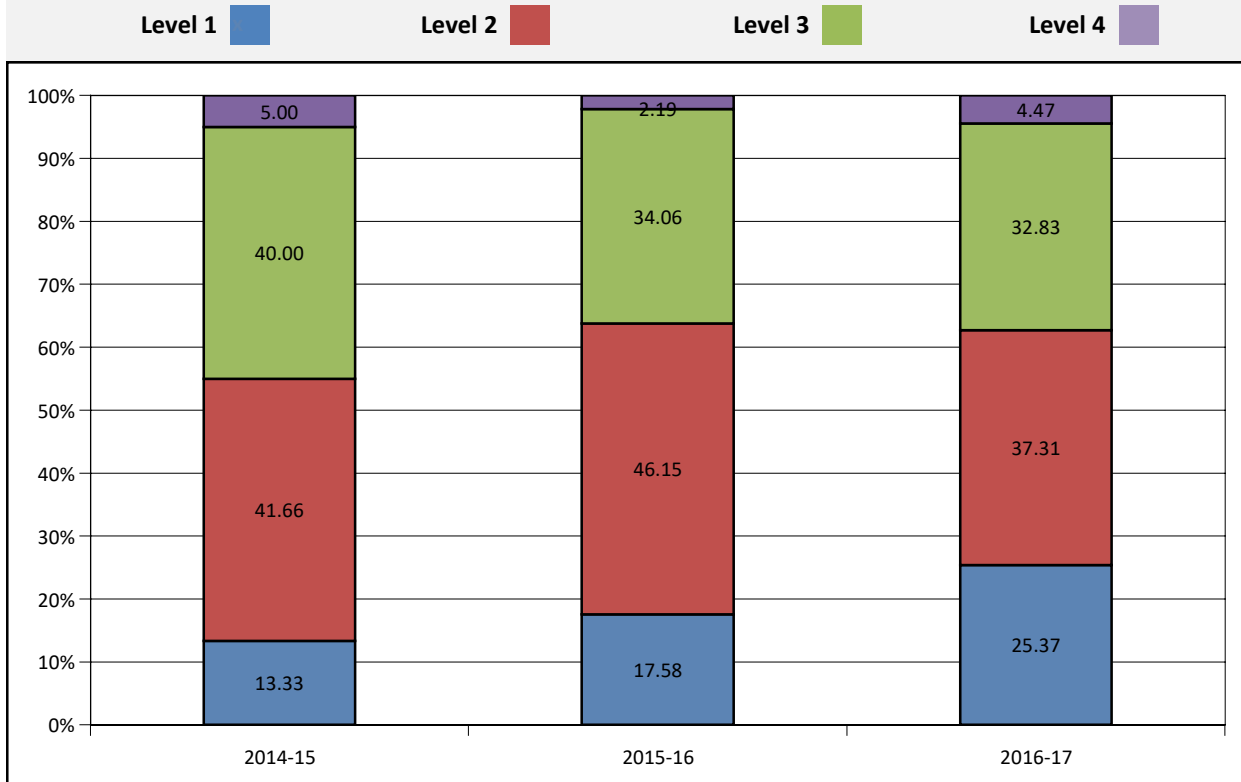
## 07 Reading Assessments Data



## 08 Reading Assessments Data



## HS Reading Assessments Data



## Math Assessments Data

### ASSESSMENT SCORING EFFECTIVE 2014-15 SCHOOL YEAR

Level 1: Student is not performing at grade-level standards.

Level 2: Student is doing grade-level work as defined by the standards but not at the depth or level of rigor to be considered on-track for college success.

Level 3: Student is performing at expectation for that grade and is on track to being college ready.

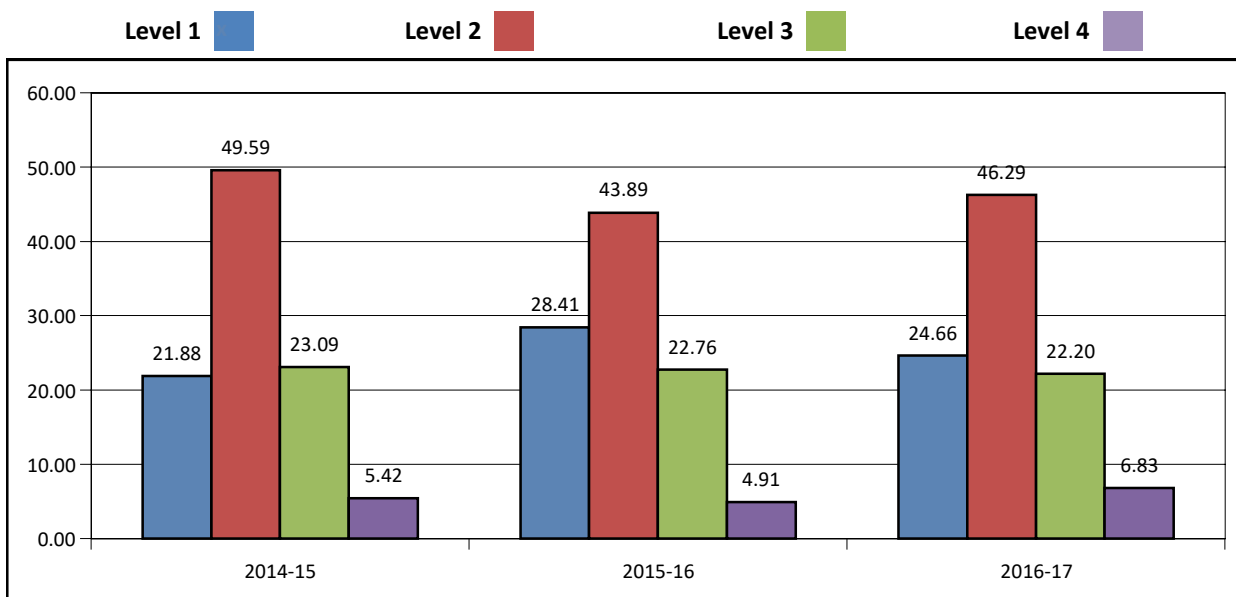
Level 4: Student is performing above expectations and is on-track to being college.

### PERCENT SCORING AT OR ABOVE GRADE LEVEL (ALL STUDENTS)

Numbers below represent the percent of students scoring in Level 2 or above. Groups with less than 10 students assessed for any given grade or year will be blank.

School Year	All USD	3rd	4th	5th	6th	7th	8th	High School
2014-15	78.10	84.49	89.15	65.38	71.63	83.32	80.80	69.99
2015-16	71.56	97.54	86.10	67.41	61.71	84.84	52.93	53.83
2016-17	75.32	90.15	93.09	74.99	62.49	78.81	56.70	70.13

### PERCENT BY SCORE LEVEL: ALL STUDENTS DISTRICT AVERAGE

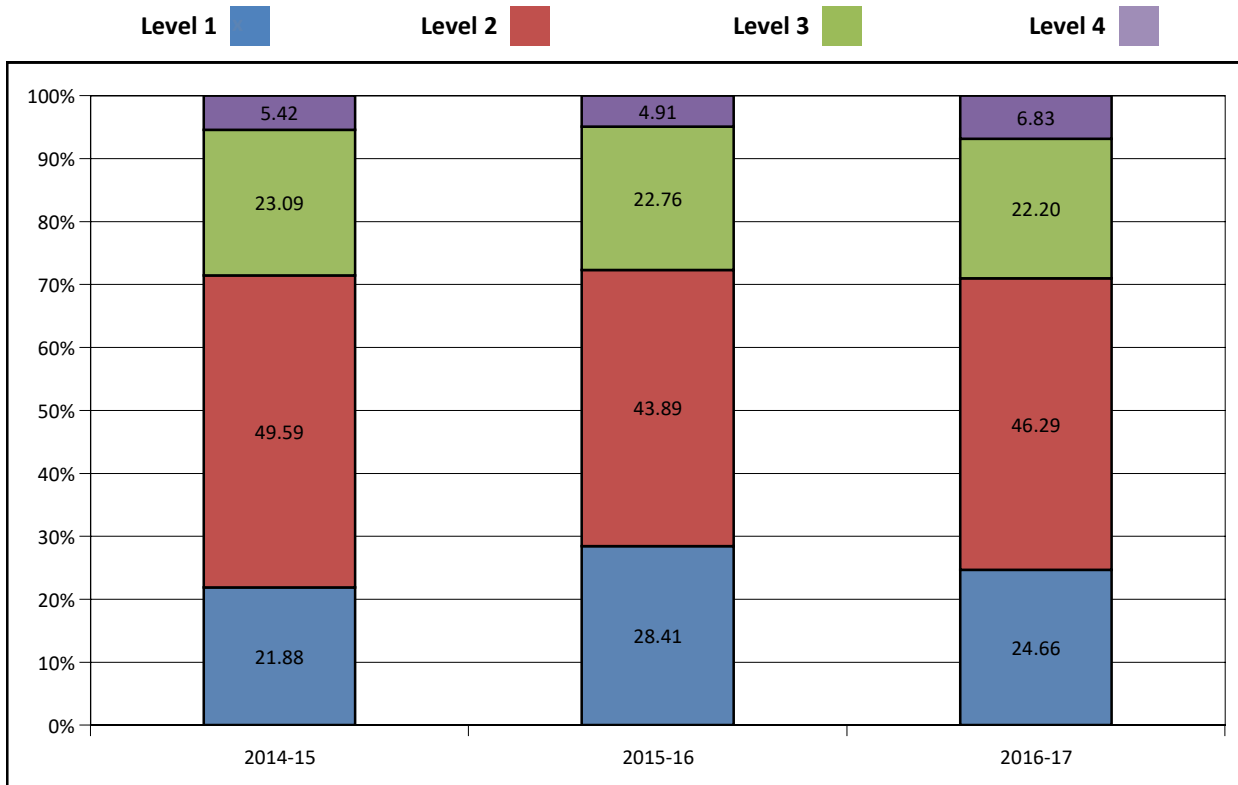


### SCORES BY SUBGROUP (ALL GRADES)

Numbers below represent the percent of students scoring in Level 2 or above. Groups with less than 10 students assessed for any given year will be blank.

School Year	All USD	All KS	FRL	SpEd	White	African American	Hispanic	Multi-Race
2014-15	78.1	77.23	68	44.24	80.12		58.61	73.32
2015-16	71.56	73.65	41.02	36.91	72.64		59.37	75
2016-17	75.32	72.34	63.63	48	75.8		74.19	61.89

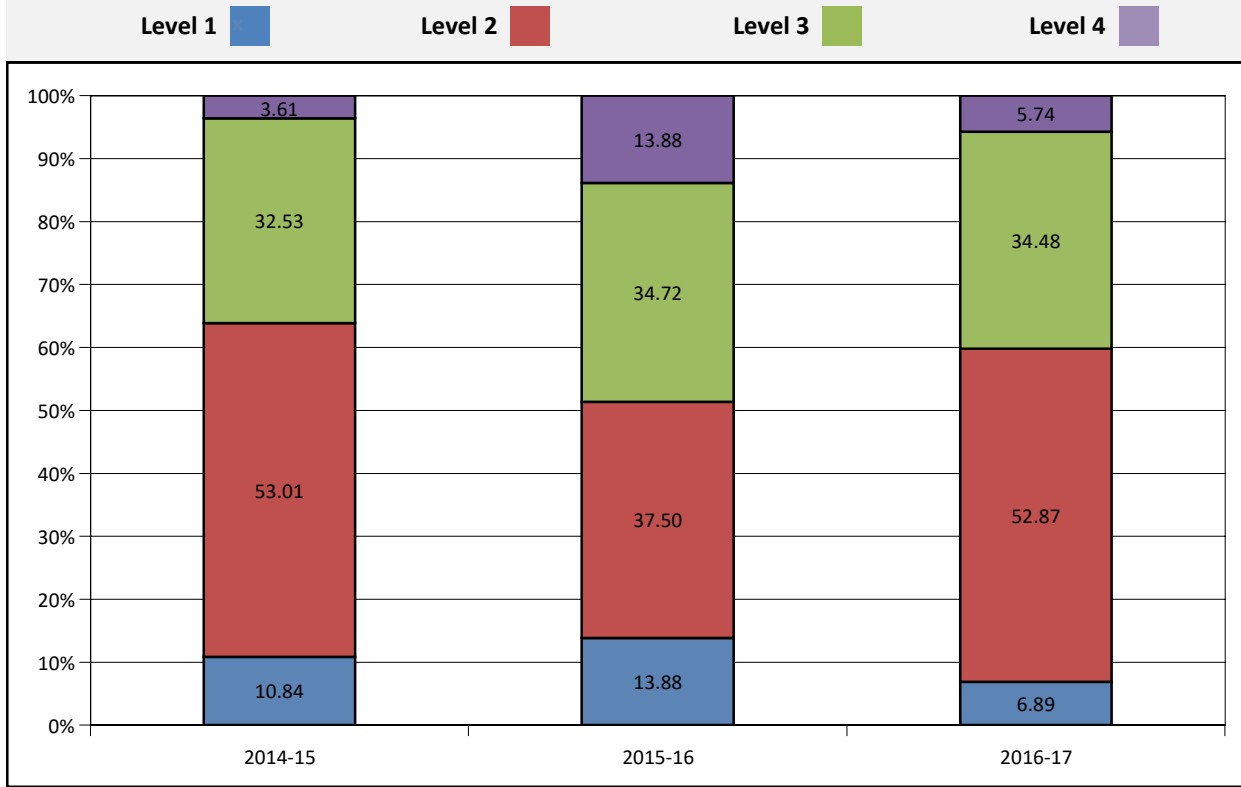
## District Average Math Assessments Data



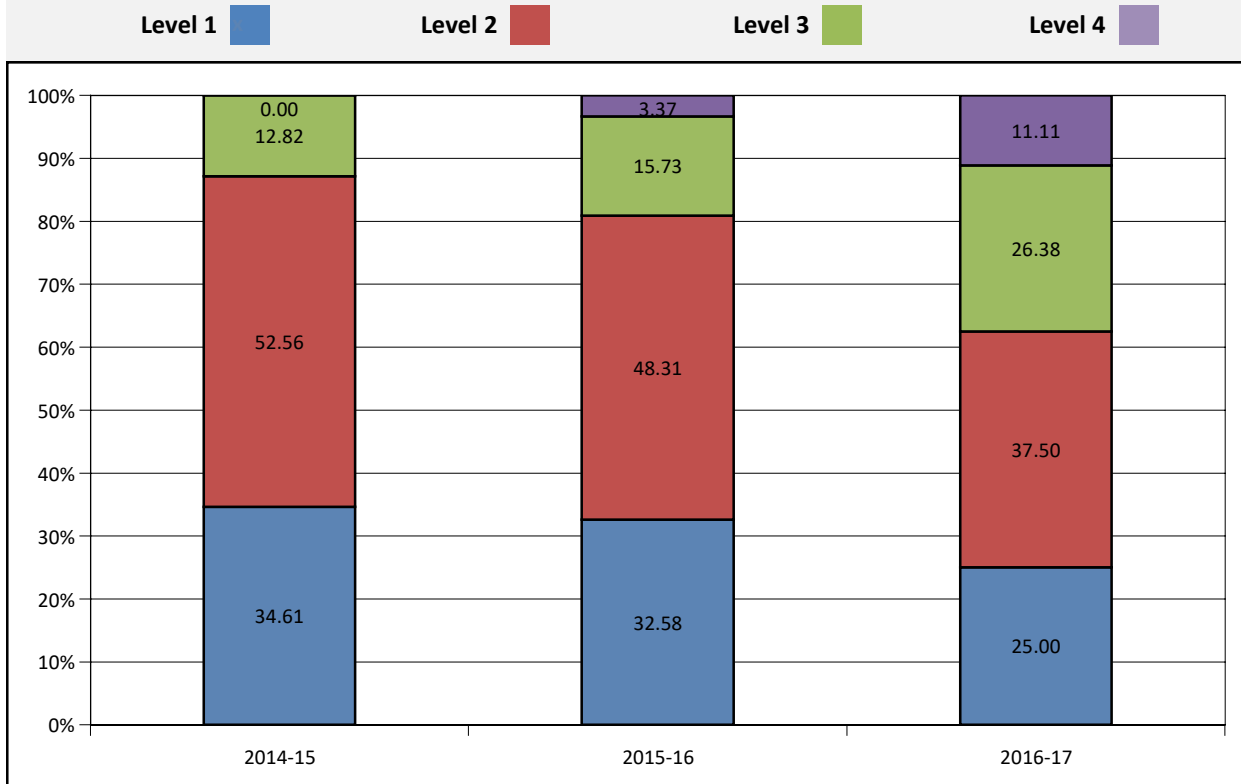
## 03 Math Assessments Data



## 04 Math Assessments Data

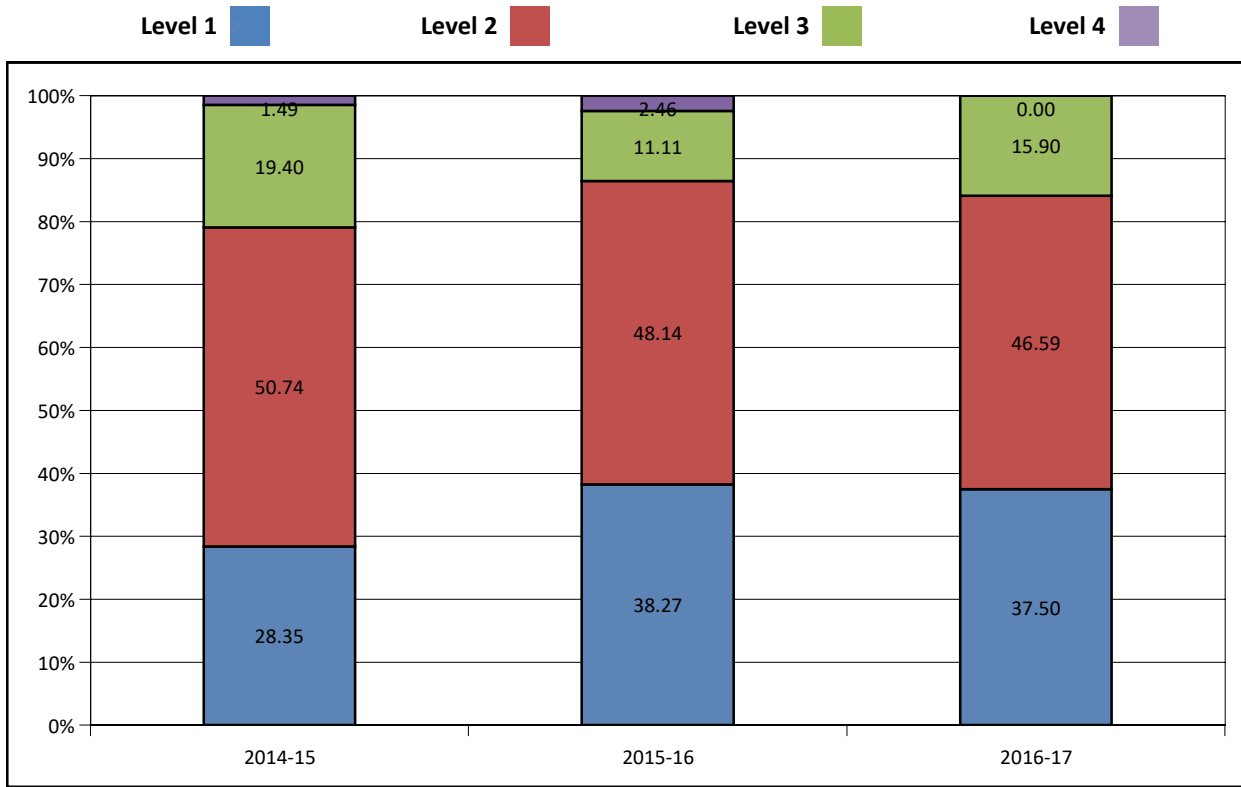


## 05 Math Assessments Data

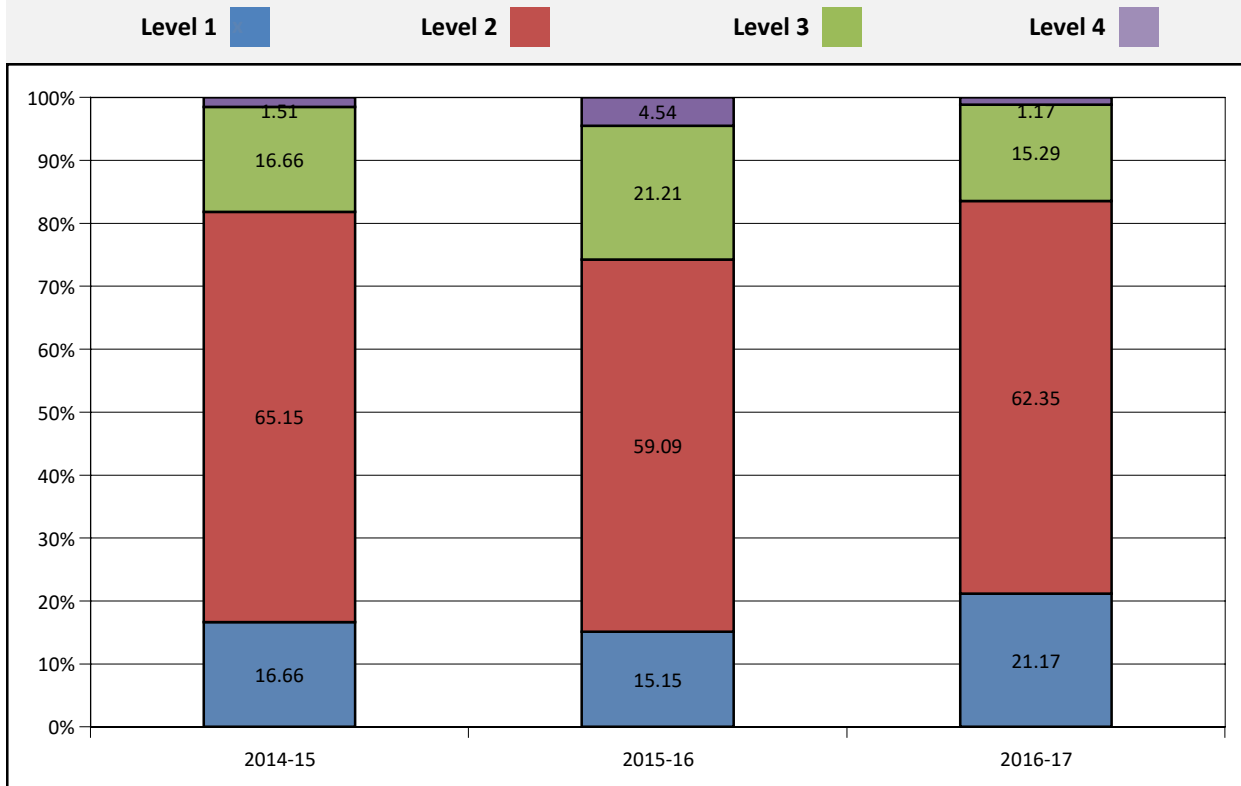




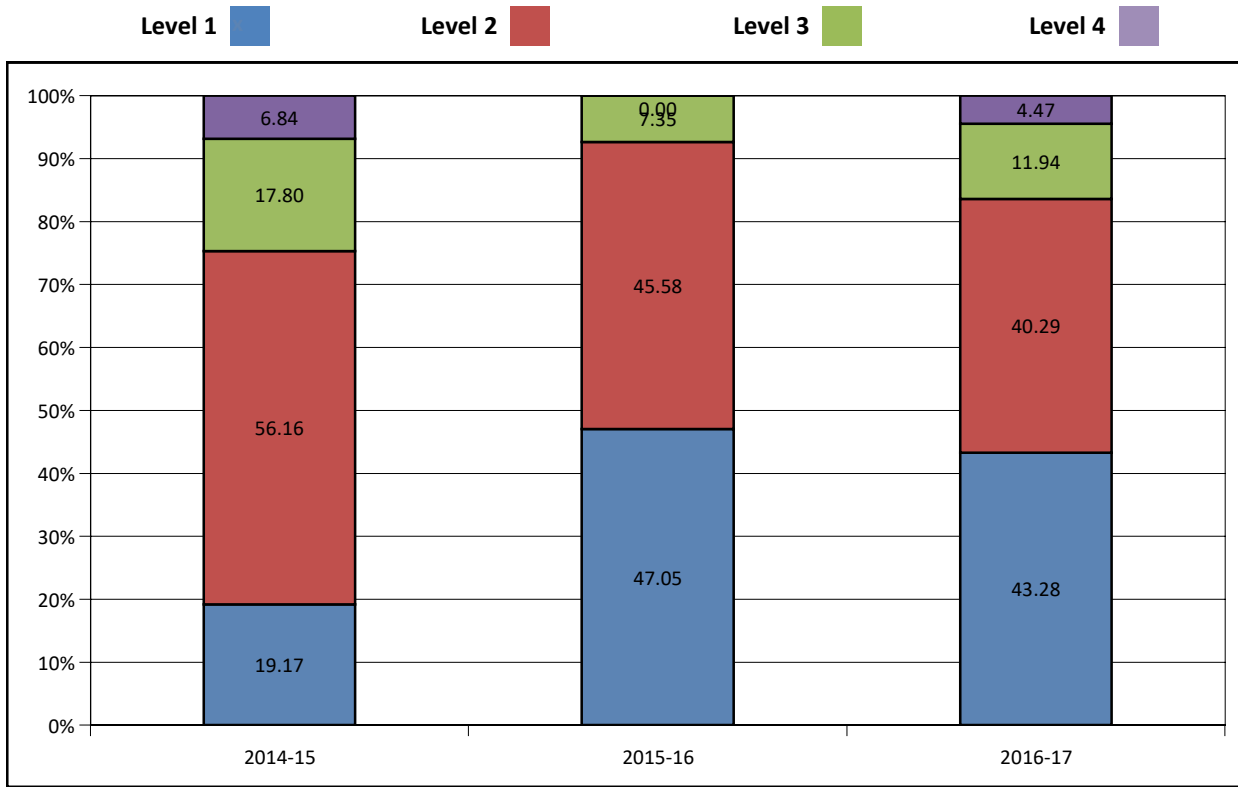
## 06 Math Assessments Data



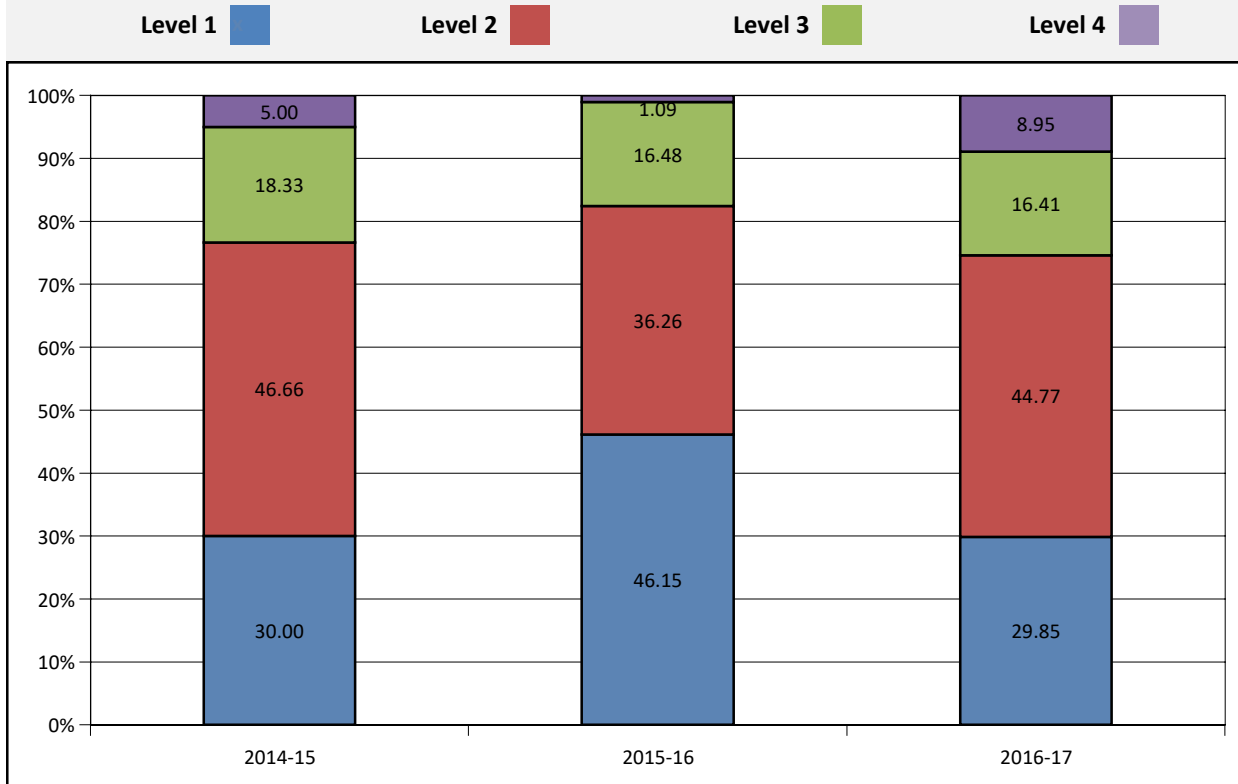
## 07 Math Assessments Data



## 08 Math Assessments Data



## HS Math Assessments Data



# District Comparisons

US Census: American Community Survey 5-Year Data 2015	District 248	USD 247 Cherokee	USD 246 Northeast	USD 235 Uniontown
--	-----------------	---------------------	----------------------	----------------------

## FAMILY INCOME:

Median Family Income	\$52,169	\$53,405	\$46,970	\$54,046
Mean Family Income	\$61,742	\$63,296	\$61,561	\$65,937
Percent of families with children in poverty	15	25.5	19.1	21.5
Percent of households with Public Asst income	1.1	3.4	2.1	1.5
Percent of households with Food Stamp benefits	10.7	9.1	17	11.3

## EDUCATIONAL ATTAINMENT:

### Population over 25 years old - percent

Less than 9th grade	3	2.8	4.8	2.1
9th to 12th grade - No Diploma	8.2	5.3	8.7	8.2
High School Diploma or Equivalency	37.4	34	39.4	33.1
Bachelor's Degree or More	12.8	12.3	10	12.7

## HOUSEHOLD COMPOSITION:

Percent of households that are families	72.4	65	61.8	74.6
Average family size	3.18	3.1	3.13	3.19
Married couple families (children under 18)	24.3	21.5	19.2	21
Single parent household- female only	3.1	4.1	5.1	4.5
Single parent household- male only	1.7	1	2.1	3.7

## Kansas State Department of Education Data

### HEADCOUNT ENROLLMENT:

Headcount Enrollment (2017-18)	1029	502	472	448
Free or reduced lunch students (%)	35.3	54.2	55.9	38.6
FTE Enrollment (2016-17)	972	465	465	418
Student / Teacher Ratio (2016-17)	13.7	11.0	11.2	11.9

### FUNDING: 2016-17

Assessed Valuation per Pupil	\$39,639	\$72,057	\$41,556	\$37,805
Expenditure per Pupil	\$13,459	\$16,289	\$15,053	\$14,488

### GRADUATION / DROPOUTS:

4-Year Cohort Graduation Rate (2015-16)	92.3	89.7	83.7	92.6
Dropout Rate (2015-16)	0.6	0.3	0.4	1

### ASSESSMENTS (% Levels 2,3,4): 2016-17

Reading Assessments (All Students)	36.5	30.3	29.3	38.5
Math Assessments (All Students)	28.1	26.3	23.2	32.0