



**R V Haderlein Elem -**  
**Girard USD 248**

520 W. Prairie, Girard, KS 66743-1128  
 (620) 724-4327  
 www.girard248.org  
 Principal: **Mark LaTurner**

District Accreditation Status: **Accredited**  
 ESSA Annual Meaningful Differentiation: **Meeting**  
 Grades: **PK-5**  
 Superintendent: **Blaise Bauer**

**Demographics**



**469 Students**

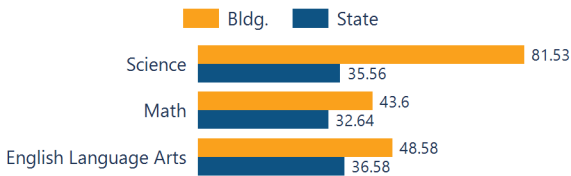
- African American 1.49 %
- Hispanic 4.69 %
- Other 5.33 %
- White 88.49 %

**Academically Prepared for Postsecondary Success**

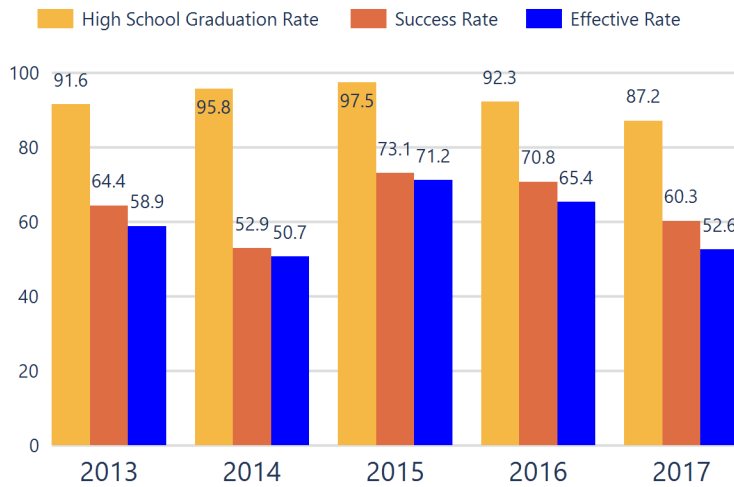
The percentage of students who scored at Levels 3 and 4 on the state assessment.

**District Kansans Can Star Recognition**

	Gold	Silver	Bronze	Copper
Academically Prepared for Postsecondary Success				★
Graduation Rate				
Postsecondary Success		★		



**District Postsecondary Effectiveness**



**Kansans CAN lead the world!**  
 Graduation **95%**  
 Effective Rate 70-75%

**Five-Year Graduation Avg 93%**

**Five-Year Success Avg 65%**

**Five-Year Effective Avg 60%**

**95% Confidence Interval for the Predicted Effectiveness Rate 46.5 - 48.5%**

The numerator and denominator in the Five-Year Averages contain total student counts over five years (2012-2016).

- Graduation Rate:** The 4-year adjusted cohort graduation rate is the number of students who graduate in four years with a regular high school diploma divided by the number of students who entered high school as 9th graders four years earlier (adjusting for transfers in and out).
- Success Rate:** A student must meet one of the four following outcomes within two years of High School graduation.
  - Student earned an Industry Recognized Certification while in High School.
  - Student earned a Postsecondary Certificate.
  - Student earned a Postsecondary Degree.
  - Student enrolled in Postsecondary in both the first and second year following High School graduation.
- Effective Rate:** The calculated Graduation Rate multiplied by the calculated Success Rate.

**GRADUATION RATE**

The four-year adjusted cohort graduation rate is the percentage of students in a cohort, adjusted for transfers into and out of the school, district, or state, who graduate with a regular high school diploma within four years of entering high school.

**ATTENDANCE RATE**

Rate at which students are present at school, not including excused or unexcused absences.

**CHRONIC ABSENTEEISM**

Percentage of students who miss 10% or more of school days per year either with or without a valid excuse.

**DROPOUT RATE**

The dropout rate is calculated annually and reflects the number of seventh– twelfth grade students who drop out in any one school year. A dropout is any student who exits school between October 1 and September 30 with a dropout EXIT code AND does not re-enroll in school by September 30.

<b>N/A</b>	State: <b>School ESSA Expenditures Per Pupil</b> 87.5
<b>95.4%</b>	State: <b>ESSA Annual Meaningful Differentiation</b> 94.5
<b>10.0%</b>	State: <b>Chronic Absenteeism</b> 13.9
<b>N/A</b>	State: <b>Dropout Rate</b> 1.4

**School ESSA Expenditures Per Pupil**

Expenditures reflect those for the normal day-to-day operation of schools as reported by the Local Education Agency. The following expenditures are excluded: capital outlay, school construction and building improvements, equipment and debt services.

**\$10,057**

State: **\$11,415**

[Click here for State Financial Accountability.](#)



School Academic Success

State Assessment scores are displayed by student subgroup over three years time in three subjects: Math, English Language Arts (ELA), and Science.

ALL STUDENTS

	2016-17			2017-18			2018-19		
	Math	ELA	Sci	Math	ELA	Sci	Math	ELA	Sci
Level 1	14.71	16.45	22.66	15.58	20.00	13.82	18.95	19.33	6.15
Level 2	41.99	35.49	37.33	35.93	32.17	25.53	37.44	32.07	12.30
Level 3	31.16	35.49	26.66	35.49	32.17	37.23	26.54	33.49	38.46
Level 4	12.12	12.55	13.33	12.98	15.65	23.40	17.06	15.09	43.07

FREE AND REDUCED LUNCH STUDENTS

	2016-17			2017-18			2018-19		
	Math	ELA	Sci	Math	ELA	Sci	Math	ELA	Sci
Level 1	20.18	19.26	29.62	22.03	23.07	18.75	28.43	26.21	8.33
Level 2	43.11	45.87	37.03	38.98	39.31	27.08	48.03	37.86	13.88
Level 3	32.11	28.44	22.22	33.05	29.91	37.50	16.66	30.09	44.44
Level 4	4.58	6.42	11.11	5.93	7.69	16.66	6.86	5.82	33.33

STUDENTS WITH DISABILITIES

	2016-17			2017-18			2018-19		
	Math	ELA	Sci	Math	ELA	Sci	Math	ELA	Sci
Level 1	42.85	52.38	N/A	50.00	50.00	N/A	50.00	43.47	N/A
Level 2	28.57	23.80	N/A	35.00	40.00	N/A	36.36	34.78	N/A
Level 3	23.80	14.28	N/A	15.00	10.00	N/A	0.00	13.04	N/A
Level 4	4.76	9.52	N/A	0.00	0.00	N/A	13.63	8.69	N/A

AFRICAN-AMERICAN STUDENTS

	2016-17			2017-18			2018-19		
	Math	ELA	Sci	Math	ELA	Sci	Math	ELA	Sci
Level 1	N/A	N/A	N/A	N/A	N/A	N/A	N/A	N/A	N/A
Level 2	N/A	N/A	N/A	N/A	N/A	N/A	N/A	N/A	N/A
Level 3	N/A	N/A	N/A	N/A	N/A	N/A	N/A	N/A	N/A
Level 4	N/A	N/A	N/A	N/A	N/A	N/A	N/A	N/A	N/A

HISPANIC STUDENTS

	2016-17			2017-18			2018-19		
	Math	ELA	Sci	Math	ELA	Sci	Math	ELA	Sci
Level 1	20.00	6.66	N/A	23.07	27.27	N/A	50.00	41.66	N/A
Level 2	53.33	53.33	N/A	61.53	45.45	N/A	25.00	33.33	N/A
Level 3	26.66	40.00	N/A	15.38	27.27	N/A	16.66	25.00	N/A
Level 4	0.00	0.00	N/A	0.00	0.00	N/A	8.33	0.00	N/A

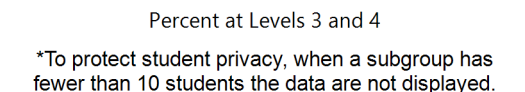
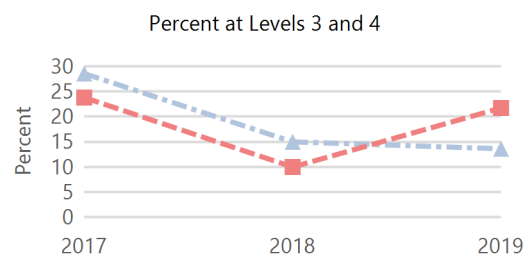
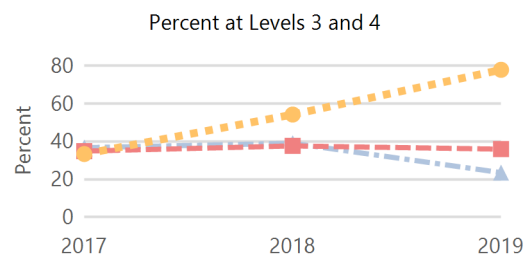
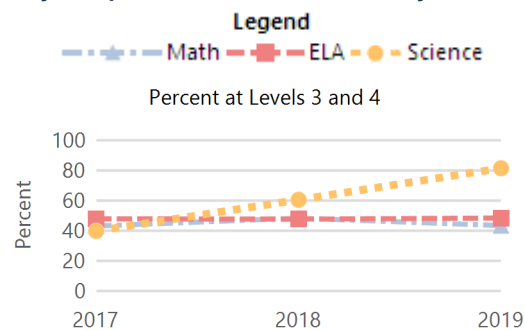
N/A: To protect student privacy, when a subgroup has fewer than 10 students, the data are not displayed.

ACT Performance (2018 School Year)

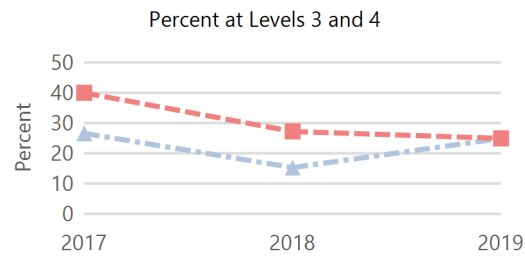
ACT is a national college admissions exam that includes subject level tests in English, Math, Reading and Science. Students receive scores that range from 1 to 36 on each subject and an overall Composite score. This report provides the average Composite score for the 2018 graduating seniors who took the ACT as sophomores, juniors, or seniors.

Note: Not all eligible students completed an ACT.

Academically Prepared for Postsecondary Success



\*To protect student privacy, when a subgroup has fewer than 10 students the data are not displayed.



Building

